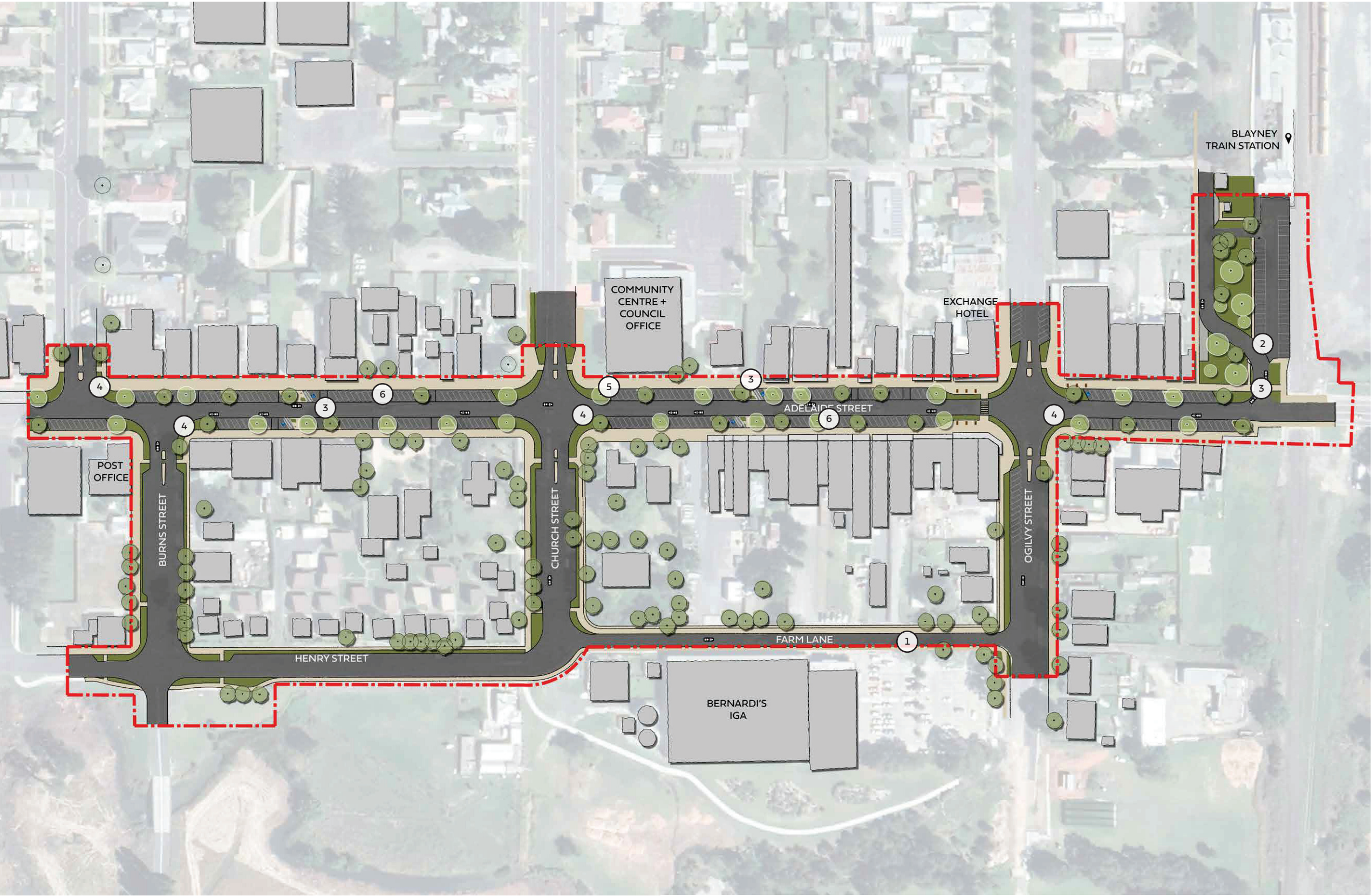
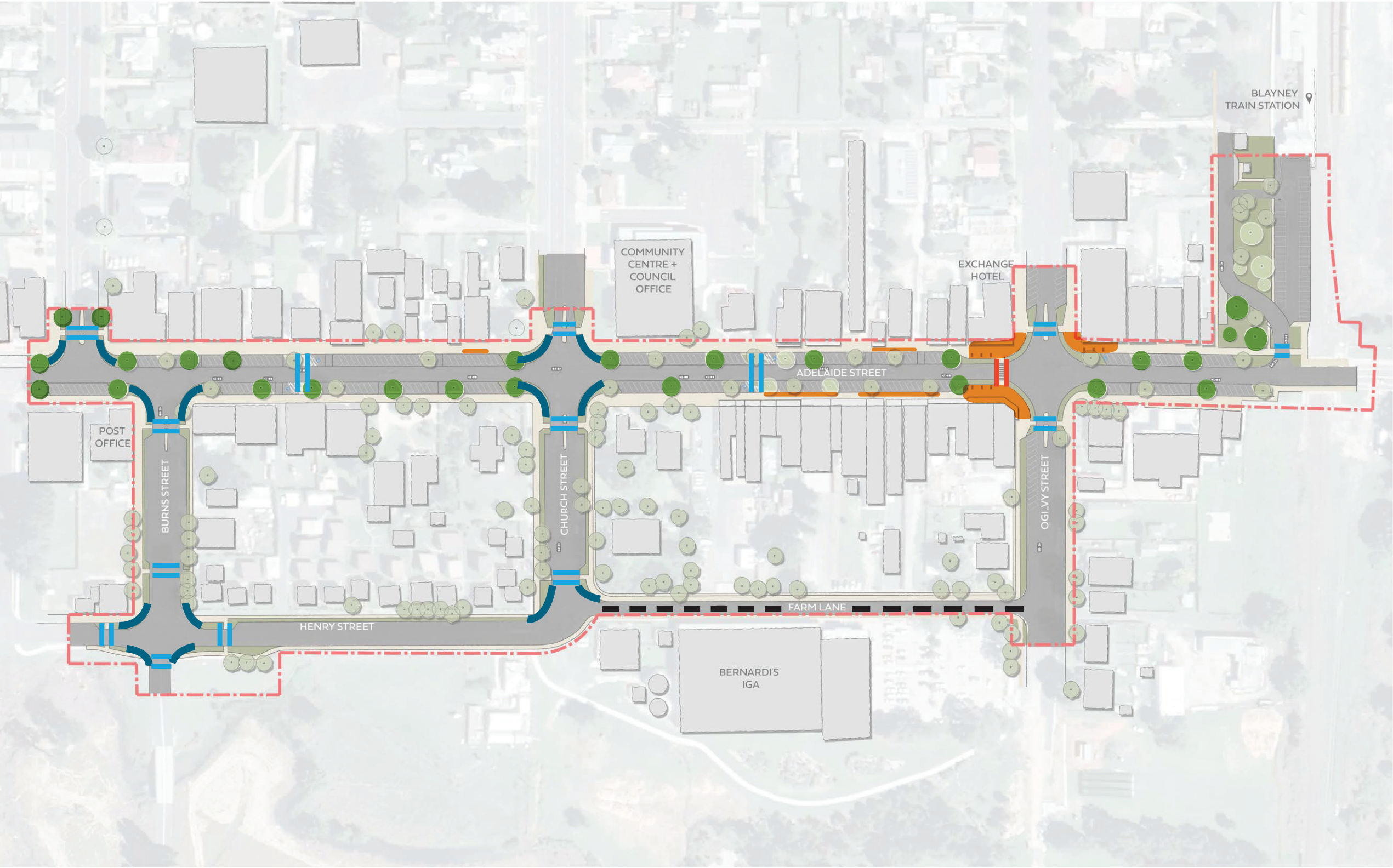


# Overall Masterplan





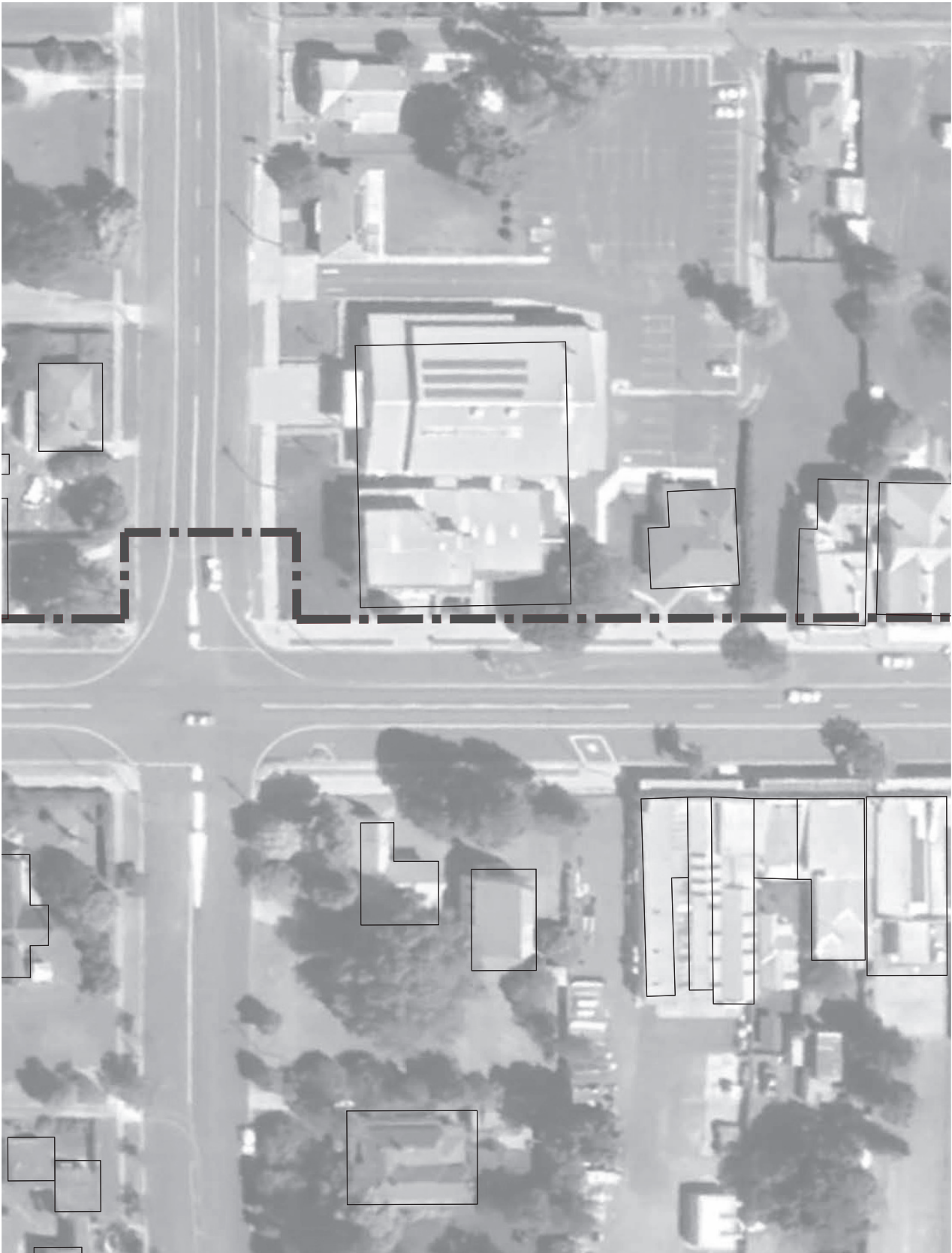
# Streetscape Improvements: Upgraded Intersections, Additional Street Trees, Outdoor Dining Locations, Accessible Parking, Speed Limit Reduction



- Legend**
- Upgraded Intersection
  - Potential Outdoor Dining
  - Additional Street trees
  - Proposed One Way (Subject to future traffic report)
  - Pedestrian Crossing Points
  - Unmarked Road Crossings



# Intersection Upgrade



Current Layout



Proposed Layout

- Legend**
  - 1

Safer road crossing point incorporating planting + street trees
  - 2

Disabled car parking spot with accessible pram ramp
  - 3

Existing street trees to be retained and planter bed size increased
  - 4

Existing reverse angled parking to be retained
  - 5

Wide planted intersection corners still allowing for large trucks to turn
  - 6

Road crossing point moved away from intersection - improving safety and accessible levels
  - 7

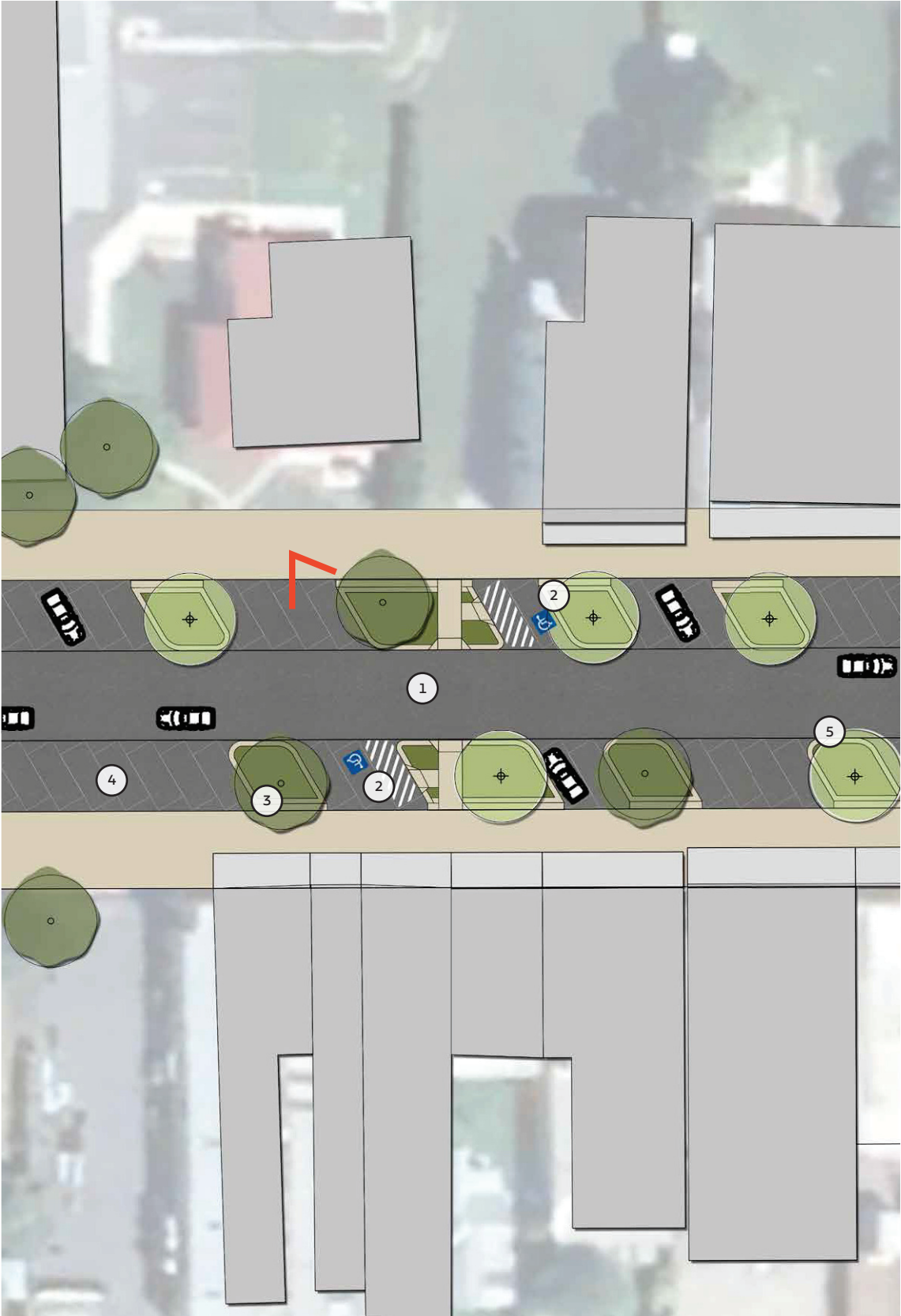
Introduction of a 40km/hr high pedestrian zone



# Road Crossing Point



Current Layout



Proposed Layout

Legend

1

Safer pedestrian crossing point incorporating planting + street trees

2

Disable car parking spot with accessible pram ramp

3

Existing street trees to be retained and planter bed size increased

4

Existing reverse angled parking to be retained

5

Proposed street trees + planting to supplement existing

Render view angle (refer to following page)



# Train Station Entrance + Parking



Current Layout



Proposed Layout

- Legend**
  - 1 Safer road crossing point incorporating planting
  - 2 Railway Lane reconfigured (2-way)
  - 3 Tran station carpark layout formalised with linemarking
  - 4 Existing reverse angled parking to be retained
  - 5 Existing street trees to be retained and planter bed size increased
  - 6 Proposed street trees
  - 7 2x Electrical vehicle charging points in carpark
  - 8 Loading bay

Render view angle (refer to following page)